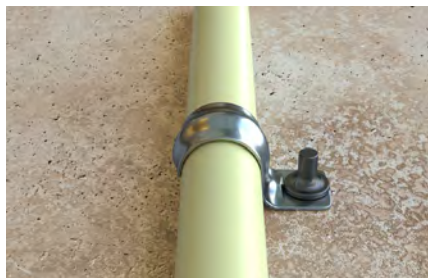


# Conduit clip BSM/BSMD/BSMZ

The flat metal clip for cables and pipes.

8



Fixing armoured conduits

## Applications

- Electrical conduits
- Flexible and rigid plastic insulating pipes
- Steel conduits

## Advantages

- The open conduit clip BSM is ideal for the post-installation fixing of conduits.
- The conduit clip allows for a direct fixing with impact nails and is, therefore, quick and easy to install.
- Two conduits or pipes can be fixed with just one fixing point with the twin clamp BSMZ.

## Building materials

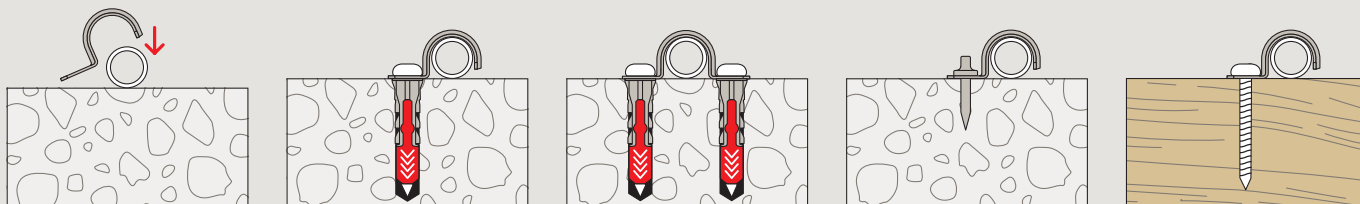
### When using impact nail ED:

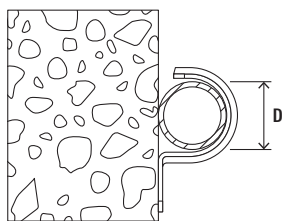
- Concrete

## Functioning

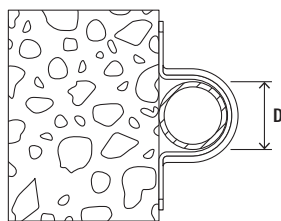
- Depending on your requirements, use a conduit clip with 1 or 2 fixing points, or a twin clamp.
- The conduits or pipes are laid in the conduit clip. Assembling the clip fixes the conduits / pipes.
- Our recommendation for fixtures on concrete: Impact nail.

## Installation BSM

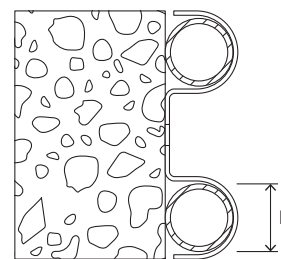




BSM



BSMD



BSMZ

**Technical data**

Conduit clip BSM



BSM

BSMD

BSMZ

Item	BSM Item no.	BSMD Item no.	BSMZ Item no.	Dimension IEC	Clamping range D [mm]	Sales unit [pcs]
6	015014	015066	-	-	6	100
8	015015	-	-	-	8	100
8	-	015067	-	-	8	50
10	015016	-	-	-	10	100
10	-	015068	-	-	10	50
12	015017	015069	-	-	12	50
14	015018	015070	-	-	14	50
15	015093	-	-	15	15	50
16	060149	060169	-	16	16	50
18	060150	060170	-	-	18	50
20	060151	060171	079535	20	20	50
22	060152	060172	-	-	22	50
24	060153	015075	079536	-	24	50
25	090839	090844	-	25	25	50
26	096958	015076	-	-	26	50
28	060155	-	079537	-	28	50
28	-	060175	-	-	28	25
30	015019	-	-	-	30	50
30	-	015078	-	-	30	25
32	090840	-	-	32	32	50
32	-	090845	-	32	32	25
37	060158	060178	-	-	37	25
40	090841	090846	-	40	40	25
42	015021	-	-	-	42	25
42	-	015081	-	-	42	20
47	-	015082	-	-	47	20
50	090842	-	-	50	50	20
50	-	090847	-	50	50	15
63	090843	-	-	63	63	15
63	-	090848	-	63	63	10